

i-RoboChem™ Station

On-line Water Analysis in the new Millennium



System Design



Data Logger/ Controller



COD Analyzer



TN Analyzer



TP Analyzer

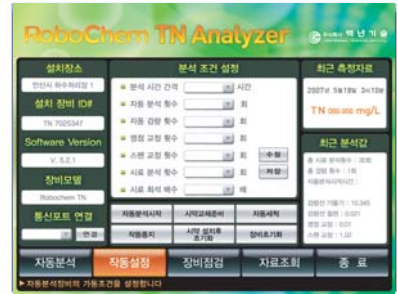


Nutrient Analyzer

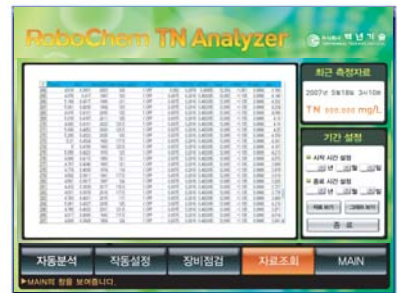




System Management



Data Management



Telemetry



Web site



Data Visualization



integrated-RoboChem™ Station

On-line Water Analysis in the new Millennium

Features

RoboChem™ is a chemical analyzer designed for on-line monitoring of industrial processes, water and effluents. It is based on patented technology which meets various requirements in the field of environmental monitoring, industrial process control and single point of source monitoring.

■ Complete and integrated solution for automatic water analysis

i-RoboChem™ Station is a compact packaged system which measures COD, total nitrogen, total phosphorus, or nutrients. It is a configurable system and appropriate analyzers can be selected according to your monitoring needs.

■ Modular design for high versatility

Modular design of RoboChem increases functionality, flexibility, and range of applications.

■ TMS link for remote control

On-line chemical analyzers provide the accessibility to RS-232C, RS-485, TCP/IP Ethernet and both wired and wireless connections.

Specifications

■ Sensors

Parameter	Specifications			
	Range	Precision	Resolution	Note
Temperature	0~100 °C	±0.5%	0.01 °C	Thermocouple or Thermister
Conductivity	0 to 70 mS/cm	±0.1 mS/cm	0.01 mS/cm	Electrode sensor
DO	0~20 mg/L	±2%	0.01 mg/L	Galvanic electrode
pH	0~14	±5%	0.1	Glass electrode
Turbidity	0~100 NTU	±1%	0.02 NTU	90° light scatter

■ Analyzers

Parameter	Specifications			
	Range	Precision	Resolution	Note
TN	0~5/10/20/50 mg/L	±2%	0.01 mg/L	High temp/high pressure oxidation UV absorption spectrometry
TP	0~0.5/1/2.5/5/10/25 mg/L	±2%	0.003 mg/L	High temp/high pressure oxidation Colorimetry
COD	0~15/30/75/150/300 mg/L	±2%	0.1 mg/L	Alkaline KMnO ₄ method
Nutrients	0~0.4/0.8/2/4/8 mg/L	±2%	0.001~0.1 mg/L	Colorimetry Ammonia, Nitrate, Nitrite, Phosphate

■ TMS

Parameter	Specifications		
Data Logger	(1) Industrial computer	(2) Digital I/O 16 channels	(3) 1Year data storage
Communication	RS-232C, RS485, TCP/IP		
Telemetry Software	Remote Data Acquisition, Remote Diagnostics, and System Alarm		

integrated-RoboChem™ Station

On-line Water Analysis in the new Millennium

Monitoring Data

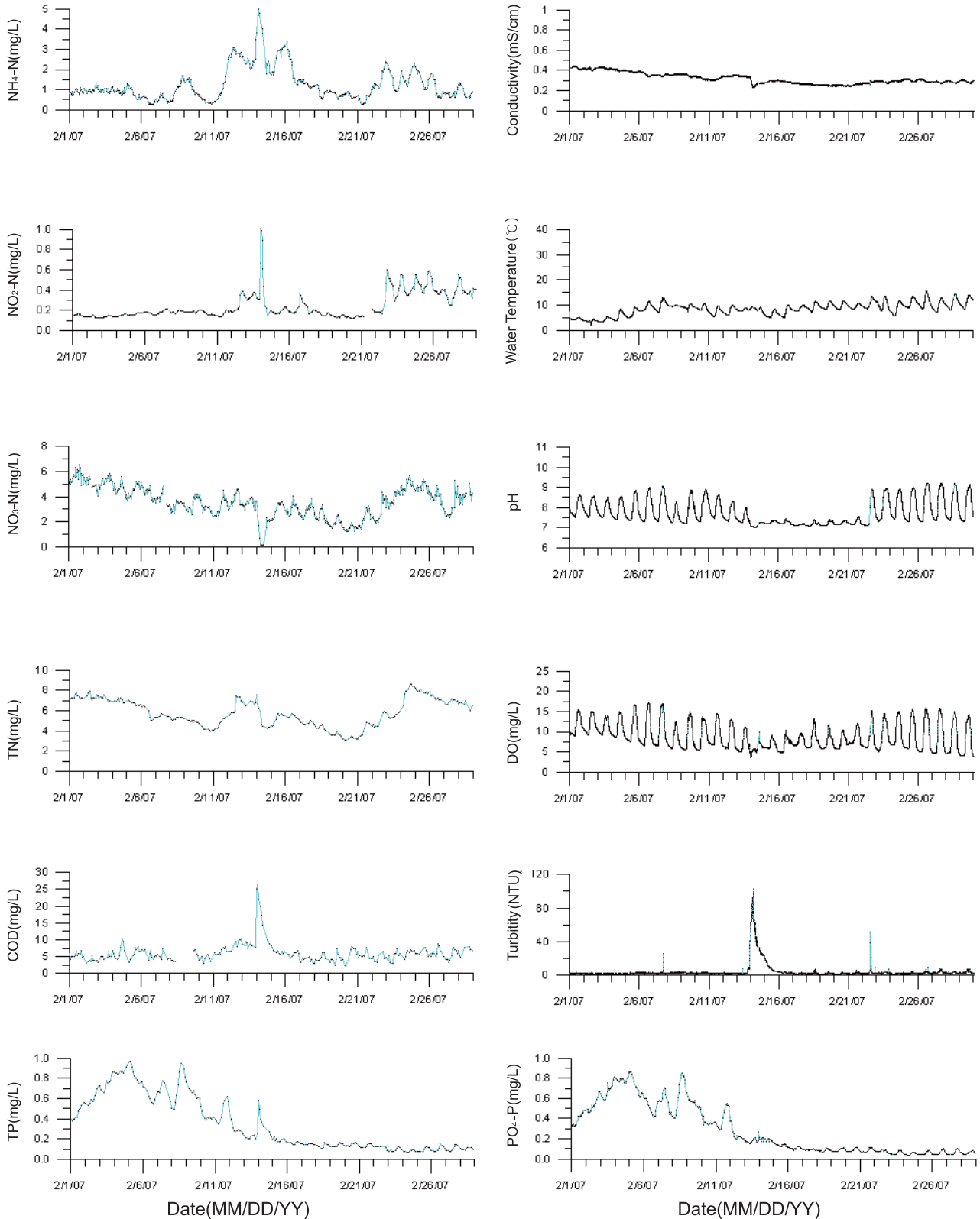


Figure 1. Temporal variations of water quality parameters in Anyang stream



“Environment for the Future”

Centennial Technology is engaged in water and process monitoring equipments, systems and services based on innovative technologies. We have made utmost effort to be a true leader who embodies the era of on-site and on-line monitoring in the new millennium. The company's core competencies lie in the design, development and manufacture of automatic analyzers, automatic samplers, and diverse monitoring platforms. Now we are proud to provide a rugged, low-cost, portable, and selective alternative to the traditional 'send-it-to-the-lab' approach.

Our extensive research and development capabilities will continue to provide customers with new monitoring solutions for lab, process, and field. RoboChem analyzers will satisfy customer's expectations by providing the highest quality and services enabled by the many years' experience in the research and development of on-line analyzers, automatic data acquisition, and telemetry systems.

- **HEAD OFFICE** Centennial Technology, Co.
Gyeonggi Technopark #816 Sa-dong 1271-11, Sangrok-gu Ansan 426-901
South Korea
- **PHONE** +82-31-500-3501~2
- **FAX** +82-31-500-3503
- **HOMEPAGE** <http://www.centech.kr/eng/index.htm>
- **E-mail** info@centech.kr



www.centech.kr